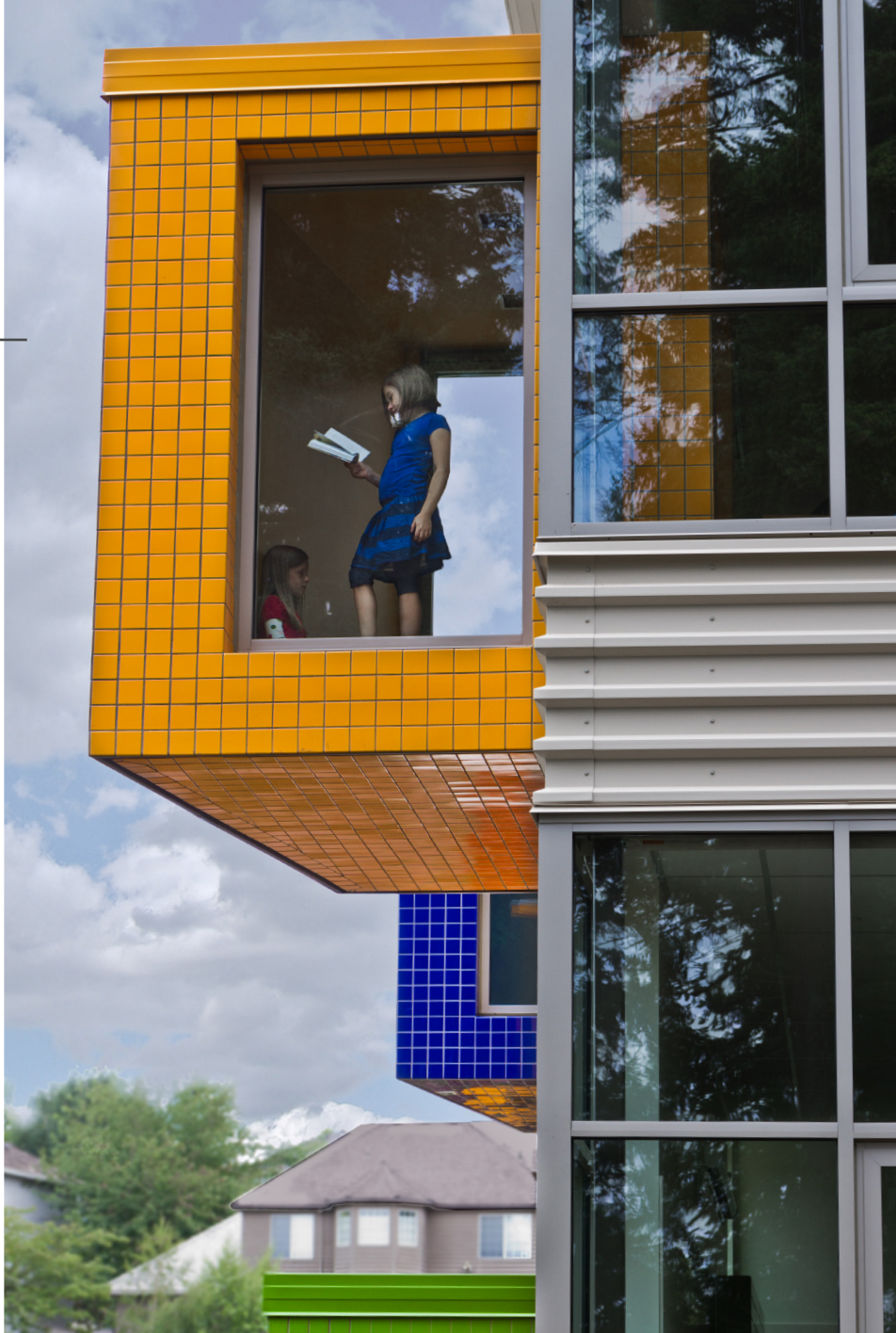


September 2015



WEST LINN - WILSONVILLE SCHOOL DISTRICT
2014 Capital Bond Program
Quarterly Report

Q3 2015

TABLE OF CONTENTS

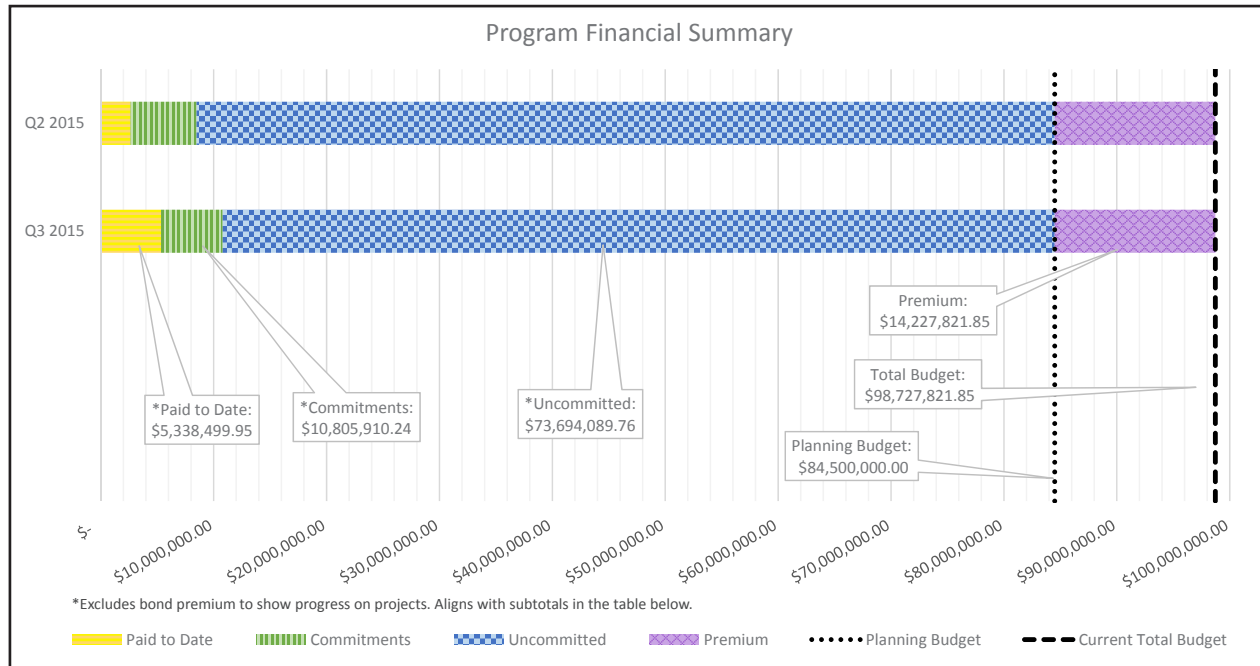
Q3 2015



| | | |
|----|---|----|
| 1. | 2014 CAPITAL BOND PROGRAM SUMMARY | 1 |
| 2. | PROJECT STATUS / SCHEDULES | |
| | WILSONVILLE MIDDLE SCHOOL | 2 |
| | SUNSET PRIMARY SCHOOL REPLACEMENT | 4 |
| | 700 BUILDING RENOVATION & ADDITION @ WLHS | 6 |
| | PERFORMING ARTS REMODEL @ WHS | 8 |
| 3. | LEARNING WITH TECHNOLOGY | 10 |
| 4. | SAFETY & SECURITY | 11 |
| 5. | DISTRICT-WIDE IMPROVEMENTS | 12 |

PROGRAM SUMMARY

Q3 2015



| | Original Budget | Approved Budget Changes | Current Budget | Current Commitments | Actuals Approved | Estimate At Completion | Forecasted Over/(Under) |
|---|-----------------|-------------------------|----------------|---------------------|------------------|------------------------|-------------------------|
| New Middle School in Wilsonville | 40,000,000.00 | 0.00 | 40,000,000.00 | 3,445,578.74 | 730,381.37 | 40,000,000.00 | 0.00 |
| Sunset Primary School Replacement | 24,000,000.00 | 0.00 | 24,000,000.00 | 2,433,809.46 | 450,204.00 | 24,000,000.00 | 0.00 |
| 700 Building Renovation & Addition @ WLHS | 3,000,000.00 | 0.00 | 3,000,000.00 | 392,430.83 | 103,479.88 | 3,000,000.00 | 0.00 |
| Performing Arts Renovation & Addition @ WHS | 3,000,000.00 | 0.00 | 3,000,000.00 | 375,177.20 | 93,820.40 | 3,000,000.00 | 0.00 |
| Technology @ D-W | 7,000,000.00 | 0.00 | 7,000,000.00 | 2,835,945.52 | 2,810,365.52 | 7,000,000.00 | 0.00 |
| Safety & Security @ D-W | 500,000.00 | 0.00 | 500,000.00 | 154,667.70 | 78,932.66 | 500,000.00 | 0.00 |
| Improvements @ D-W | 7,000,000.00 | 0.00 | 7,000,000.00 | 1,168,300.79 | 1,071,316.12 | 7,000,000.00 | 0.00 |
| Subtotals | 84,500,000.00 | 0.00 | 84,500,000.00 | 10,805,910.24 | 5,338,499.95 | 84,500,000.00 | 0.00 |
| *Bond Premium | 14,227,821.85 | 0.00 | 14,227,821.85 | 257,464.42 | 257,464.42 | 14,227,821.85 | 0.00 |
| Grand Totals | 98,727,821.85 | 0.00 | 98,727,821.85 | 11,063,374.66 | 5,595,964.37 | 98,727,821.85 | 0.00 |

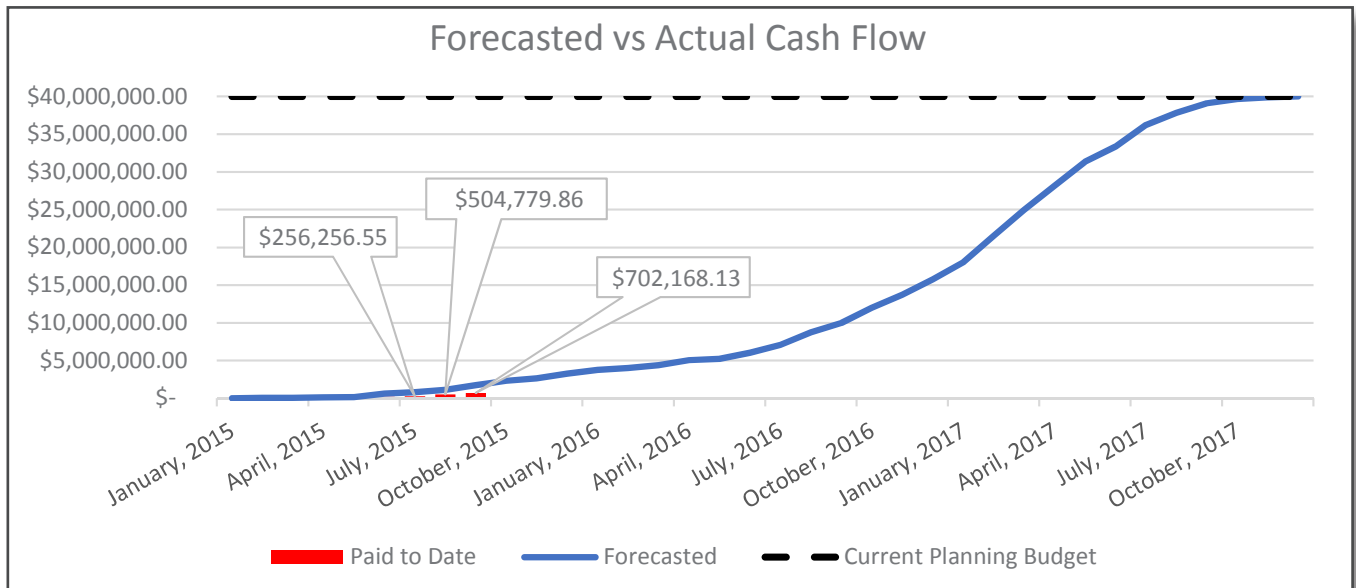
*Includes \$4,505,000.00 in as-yet unsold bonds.

- Voters successfully passed a measure to authorize the school district to sell up to \$84,500,000.00 million dollars of general obligation bonds in November 2014. The School Board authorized the sale of \$79,995,000.00 in general obligation bonds in March of this year. Current market conditions resulted in a premium on bond sales as shown in the bond program premium table above. This premium value includes the as-yet unsold \$4,505,000.00 in bonds already authorized by voters, providing a clear picture of the total funds available to the district for this bond program.
- After the measure was passed the significant task of selecting consultants to help with the bond program began. Formal competitive Requests for Proposals were publicly advertised and processed in compliance with public procurement law. Consultant services needed include program mangement, architecture, civil engineering, mechanical engineering, electrical engineering, special inspections, landscape architecture, land surveying, traffic engineering and others.
- At the same time the program master budget and schedule were developed. Projects were grouped in ways to create projects that were efficient to bid and construct, and scheduled according to urgency of the improvements.
- The School Board assigned bond oversight responsibilities to the Long Range Planning Committee, with a specific list of goals. The Bond Oversight Committee met in April and July, David Lake was elected chair, and Gretchen Katko elected vice-chair.



NEW MIDDLE SCHOOL IN WILSONVILLE

Q3 2015



| | 2014 | | 2015 | | | | | | | | 2016 | | | | | | | | 2017 | | | | | | | |
|-----------|---------|---|------|---|----|---|----|---|----|---|---------|---|----|---|----|---|----|---|------|---|----|---|----|---|----|---|
| | Q4 | | Q1 | | Q2 | | Q3 | | Q4 | | Q1 | | Q2 | | Q3 | | Q4 | | Q1 | | Q2 | | Q3 | | Q4 | |
| | N | D | J | F | M | A | M | J | J | A | S | O | N | D | J | F | M | A | M | J | J | A | S | O | N | D |
| | | | | | | | | | | | | | | | | | | | | | | | | | | |
| Design | PLANNED | | | | | | | | | | | | | | | | | | | | | | | | | |
| | ACTUAL | | | | | | | | | | | | | | | | | | | | | | | | | |
| Permit | PLANNED | | | | | | | | | | | | | | | | | | | | | | | | | |
| | ACTUAL | | | | | | | | | | | | | | | | | | | | | | | | | |
| Construct | | | | | | | | | | | PLANNED | | | | | | | | | | | | | | | |
| | | | | | | | | | | | ACTUAL | | | | | | | | | | | | | | | |

Recent Activities:

- The schematic design estimate showed a marked increase in the anticipated cost of construction based on current market conditions and escalation
- A number of City of Wilsonville Ordinances have been recorded including Ordinance 773 to annex the property into the City of Wilsonville, Ordinance 774 for the comprehensive plan map amendment, and Ordinance 775 for a zone change to public facility zone.

Upcoming Activities:

- The District continues conversations with the City of Wilsonville regarding a proposed development agreement for the required right of way improvements along Advance Road including two new public roadways within the project site. The Bond Team continues to explore procurement options for both off site work and on site work.
- Bond Management Team will review the design with Educational specification group and the Architect will present the project to the School Board on October 19th.
- A public meeting will be held in early November to present the project to neighbors and the general public.
- Design Development is scheduled to be complete in early January.
- Stage 2 land use application with the City of Wilsonville begins in November and will continue into March of 2016.

NEW MIDDLE SCHOOL IN WILSONVILLE

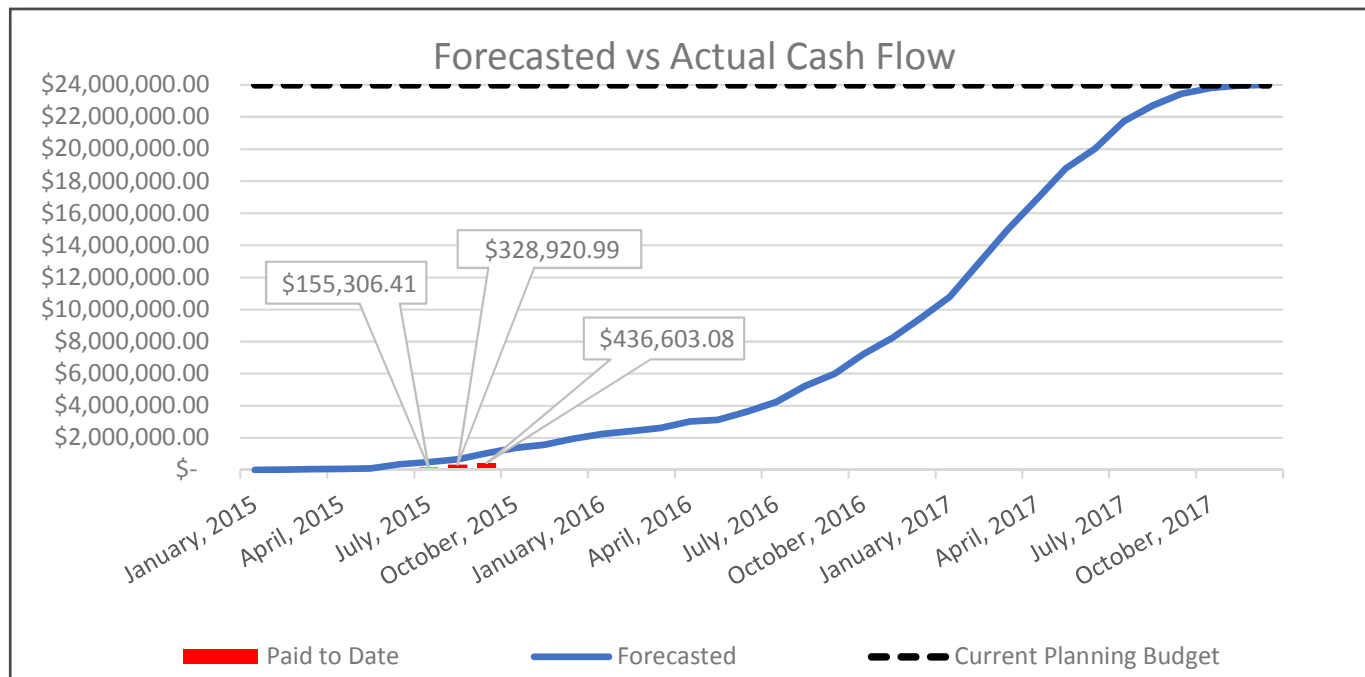
Q3 2015

DESIGN CONCEPT



SUNSET PRIMARY SCHOOL REPLACEMENT

Q3 2015



| | 2014 | | 2015 | | | | | | | | 2016 | | | | | | | | 2017 | | | | | | | |
|-----------|---------|---|------|---|----|---|----|---|----|---|------|---|----|---|----|---|----|---|------|---|----|---|----|---|----|---|
| | Q4 | | Q1 | | Q2 | | Q3 | | Q4 | | Q1 | | Q2 | | Q3 | | Q4 | | Q1 | | Q2 | | Q3 | | Q4 | |
| | N | D | J | F | M | A | M | J | J | A | S | O | N | D | J | F | M | A | M | J | J | A | S | O | N | D |
| Design | PLANNED | | | | | | | | | | | | | | | | | | | | | | | | | |
| | ACTUAL | | | | | | | | | | | | | | | | | | | | | | | | | |
| Permit | PLANNED | | | | | | | | | | | | | | | | | | | | | | | | | |
| | ACTUAL | | | | | | | | | | | | | | | | | | | | | | | | | |
| Construct | PLANNED | | | | | | | | | | | | | | | | | | | | | | | | | |
| | ACTUAL | | | | | | | | | | | | | | | | | | | | | | | | | |

Recent Activities:

- Schematic Design drawings have been received and reviewed in light of regulatory requirements, programming requirements and public input
- The schematic design estimate showed a marked increase in the anticipated cost of construction based on current market conditions and escalation
- An initial value engineering session was held to identify means of bringing the project budget back into alignment
- The District's surveyor has labeled the trees on site in preparation for a review by a certified arborist and the landscape architect

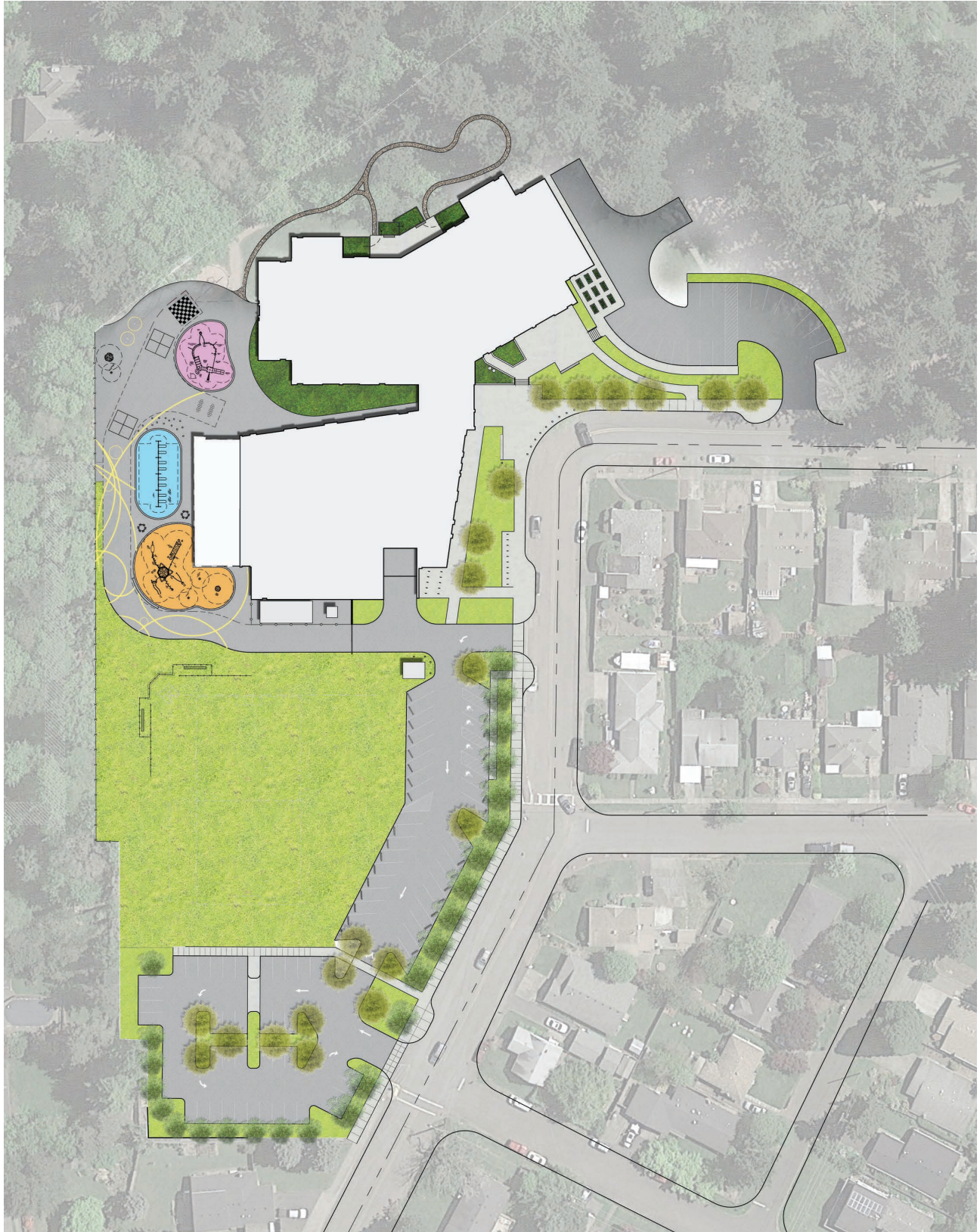
Upcoming Activities:

- The project team will meet with the Sunset Neighborhood Association in October. This presentation was delayed to allow time for the design to respond to some of the public input received, particularly around parking and use of the southern portion of the property. The proposed design accommodates these concerns to the extent possible within the City of West Linn development code.
- The design will be submitted for land use with the City of West Linn in late October.
- The trees will be reviewed to determine their condition and the impact of construction

SUNSET PRIMARY SCHOOL REPLACEMENT

Q3 2015

DESIGN CONCEPT



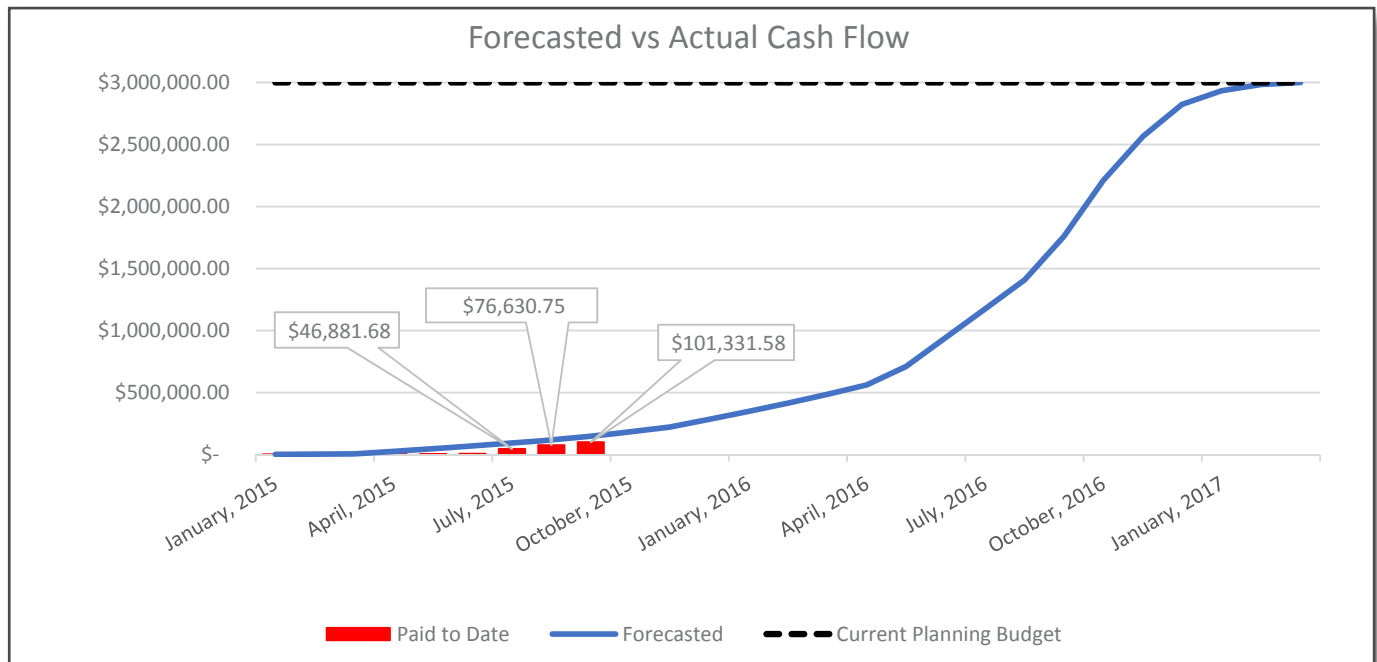
SUNSET PRIMARY SCHOOL REPLACEMENT

Q3 2015



700 BUILDING RENOVATION & ADDITION AT WLHS

Q3 2015



| | 2014 | | 2015 | | | | | | | | | | 2016 | | | | | | | | | | 2017 | | | | | | | | | | | | | | | | | | | | | |
|-----------|------|---|--|---|---|----|---|---|----|---|---|----|------|---|----|--|---|----|---|---|----|---|------|----|---|---|----|---|---|----|---|---|----|---|---|----|---|---|--|--|--|--|--|--|
| | Q4 | | Q1 | | | Q2 | | | Q3 | | | Q4 | | | Q1 | | | Q2 | | | Q3 | | | Q4 | | | Q1 | | | Q2 | | | Q3 | | | Q4 | | | | | | | | |
| | N | D | J | F | M | A | M | J | J | A | S | O | N | D | J | F | M | A | M | J | J | A | S | O | N | D | J | F | M | A | M | J | J | A | S | O | N | D | | | | | | |
| | | | | | | | | | | | | | | | | | | | | | | | | | | | | | | | | | | | | | | | | | | | | |
| Design | | | <div><div>PLANNED</div><div>ACTUAL</div></div> | | | | | | | | | | | | | | | | | | | | | | | | | | | | | | | | | | | | | | | | | |
| | | | | | | | | | | | | | | | | | | | | | | | | | | | | | | | | | | | | | | | | | | | | |
| Permit | | | <div><div>PLANNED</div><div>ACTUAL</div></div> | | | | | | | | | | | | | | | | | | | | | | | | | | | | | | | | | | | | | | | | | |
| | | | | | | | | | | | | | | | | | | | | | | | | | | | | | | | | | | | | | | | | | | | | |
| Construct | | | | | | | | | | | | | | | | <div><div>PLANNED</div><div>ACTUAL</div></div> | | | | | | | | | | | | | | | | | | | | | | | | | | | | |
| | | | | | | | | | | | | | | | | <div><div>PLANNED</div><div>ACTUAL</div></div> | | | | | | | | | | | | | | | | | | | | | | | | | | | | |

Recent Activities:

- The schematic design estimate showed a marked increase in the anticipated cost of construction based on current market conditions and escalation
- The schematic design was reviewed and feedback provided to the design team

Upcoming Activities:

- The project will be submitted to the City of West Linn for land use review in late October
- Bond Management Team will review the design with Educational specification group and the Architect will present the project to the School Board on October 19th
- The design document phase of design will be complete in late October

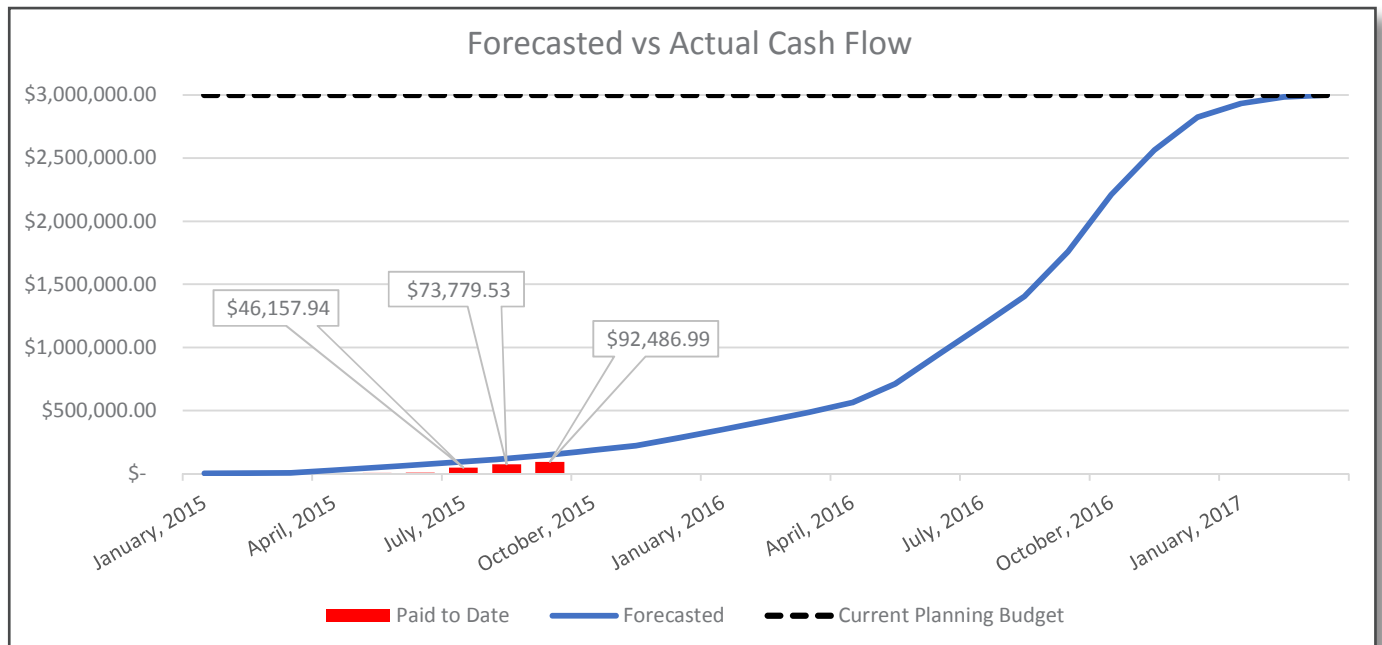


DESIGN CONCEPT



PERFORMING ARTS RENOVATION & ADDITION @ WHS

Q3 2015



| | 2014 | | 2015 | | | | | | | | | | 2016 | | | | | | | | | | 2017 | | | | | | | | | | | | | | | |
|-----------|------|---|--------------------|---|---|----|---|----|---|---|----|---|--------------------|---|---|----|---|----|---|----|---|----|------|---|----|---|---|----|---|----|---|---|---|---|---|---|---|---|
| | Q4 | | Q1 | | | Q2 | | Q3 | | | Q4 | | Q1 | | | Q2 | | Q3 | | Q4 | | Q1 | | | Q2 | | | Q3 | | Q4 | | | | | | | | |
| | N | D | J | F | M | A | M | J | J | A | S | O | N | D | J | F | M | A | M | J | J | A | S | O | N | D | J | F | M | A | M | J | J | A | S | O | N | D |
| | | | | | | | | | | | | | | | | | | | | | | | | | | | | | | | | | | | | | | |
| Design | | | <div>PLANNED</div> | | | | | | | | | | | | | | | | | | | | | | | | | | | | | | | | | | | |
| | | | <div>ACTUAL</div> | | | | | | | | | | | | | | | | | | | | | | | | | | | | | | | | | | | |
| | | | | | | | | | | | | | | | | | | | | | | | | | | | | | | | | | | | | | | |
| Permit | | | <div>PLANNED</div> | | | | | | | | | | | | | | | | | | | | | | | | | | | | | | | | | | | |
| | | | <div>ACTUAL</div> | | | | | | | | | | | | | | | | | | | | | | | | | | | | | | | | | | | |
| | | | | | | | | | | | | | | | | | | | | | | | | | | | | | | | | | | | | | | |
| Construct | | | | | | | | | | | | | <div>PLANNED</div> | | | | | | | | | | | | | | | | | | | | | | | | | |
| | | | | | | | | | | | | | <div>ACTUAL</div> | | | | | | | | | | | | | | | | | | | | | | | | | |

Recent Activities:

- The schematic design estimate showed a marked increase in the anticipated cost of construction based on current market conditions and escalation
- The schematic design was reviewed and feedback provided to the design team
- The design development drawings have been received and are currently being reviewed by the Bond Management Team
- The design development estimate is currently being prepared
- The project was submitted to the City of Wilsonville for land use October 13, 2015

Upcoming Activities:

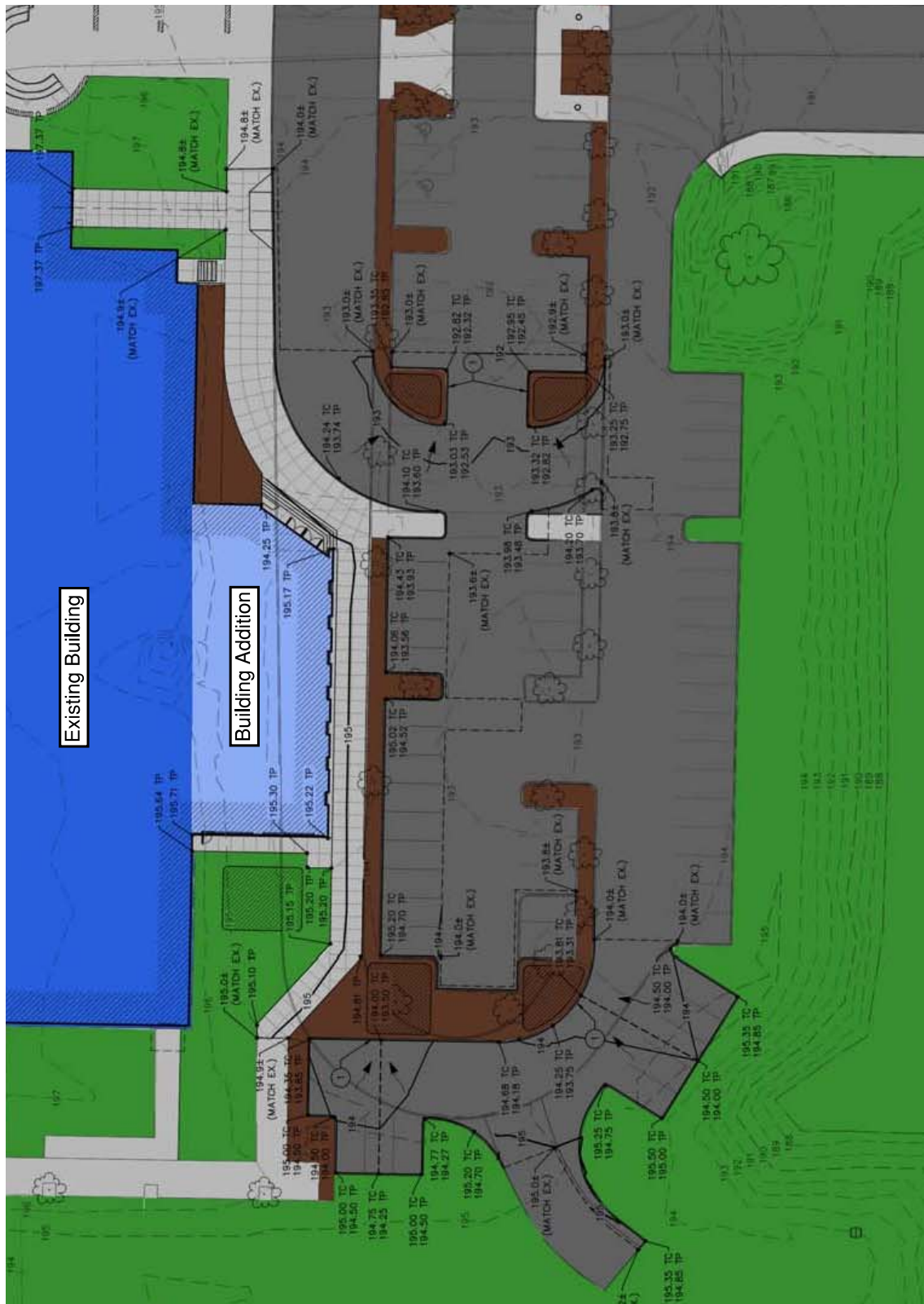
- Design development estimate review
- Construction document completion is scheduled for January 2016
- Contractor prequalification will begin in January 2016



PERFORMING ARTS RENOVATION & ADDITION @ WHS

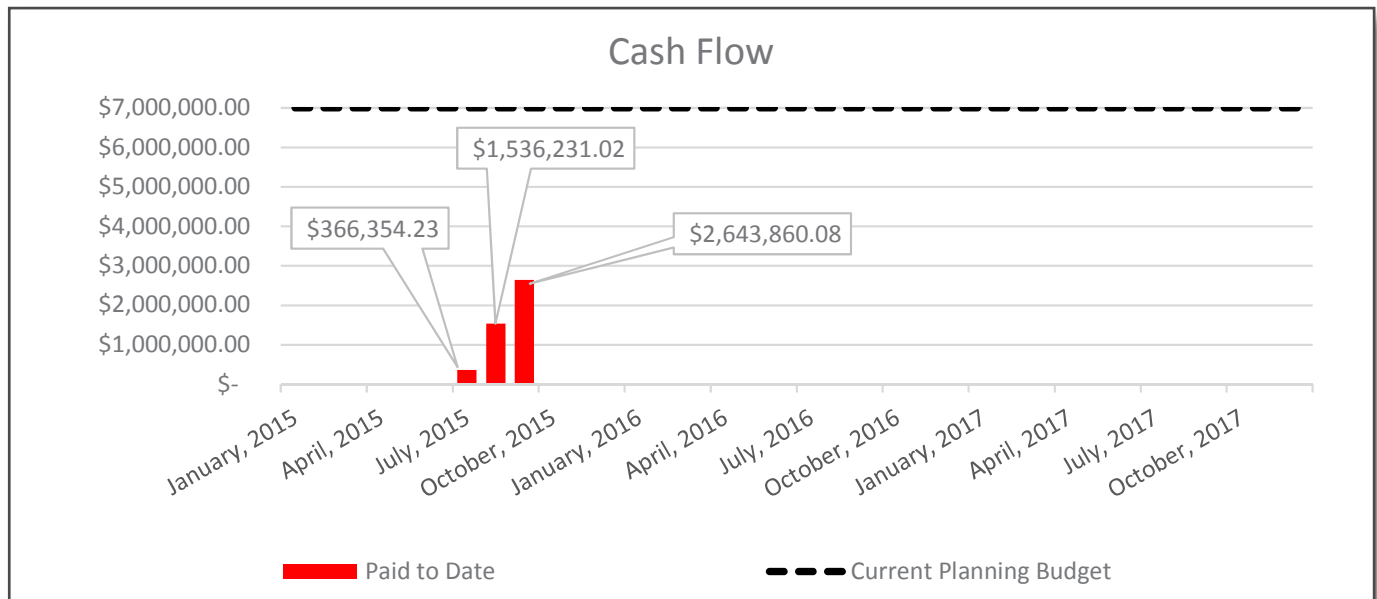
Q3 2015

DESIGN CONCEPT



LEARNING WITH TECHNOLOGY

Q3 2015



The West Linn-Wilsonville School District has a strong history of creating and implementing a dynamic and comprehensive technology plan that supports the district's technology systems and networks, efficient work environments, innovative and effective instructional practices, and trends in Science, Technology, Engineering & Mathematics (STEM) education (including increasingly robust robotics and engineering programs). Specific areas of upgrades that have been identified are:

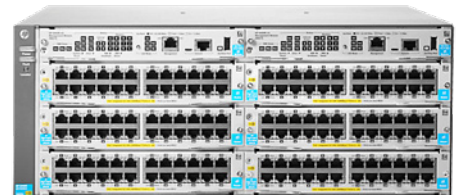
- WiFi Upgrades
- Circuit Upgrades
- Dark Fiber
- User Devices
- Teacher Presentation Systems
- Server Updates/Upgrades
- Office Computer Systems
- Network Upgrades
- Intercoms

Recent Activities:

- WAN Updates
- New Router, New Firewall, and Electronics Updates
- Wifi Updates
- Server Environment Updates
- Student Device Updates
- Teaching Station Updates
- Select Intercom Enhancements
- Select Clock System Replacements
- Planning Discussions for Future Updates

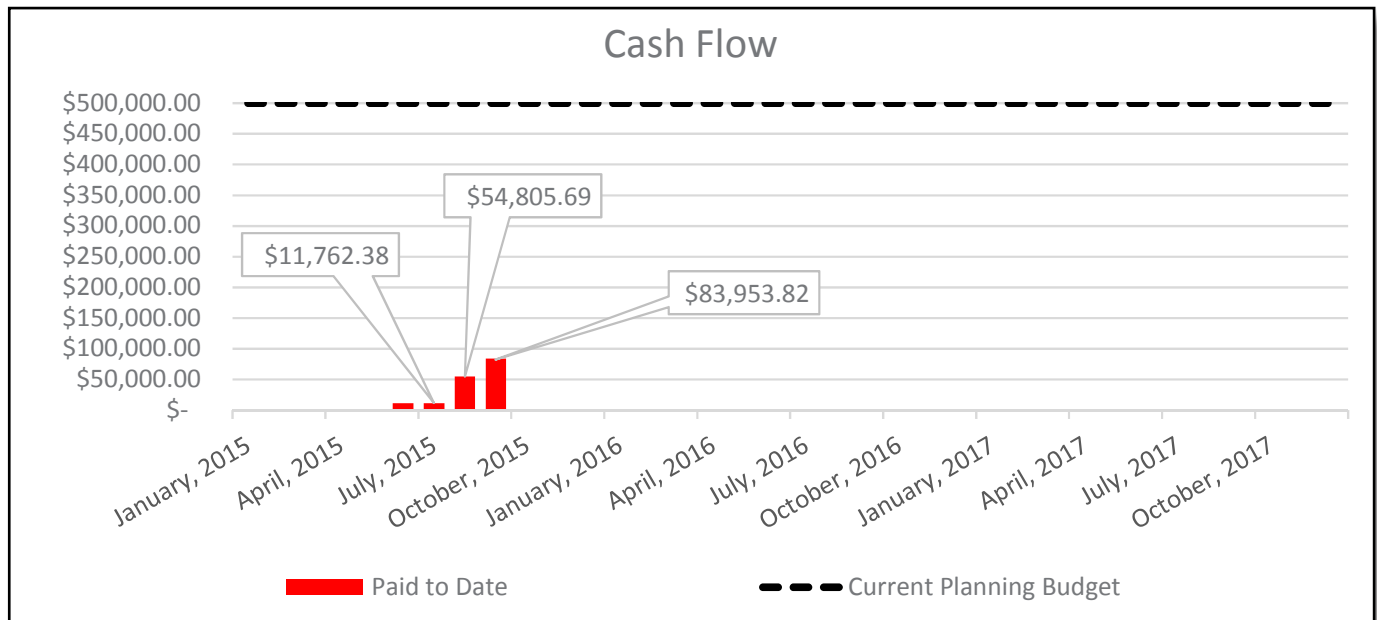
Upcoming Activities:

- WAN Updates
- Wifi Updates
- Student Device Updates
- Teaching Station Updates
- Planning Discussions for Future Updates



SAFETY & SECURITY

Q3 2015



West Linn-Wilsonville School District is committed to creating and maintaining safe, secure facilities for students, staff and patrons as a partnership with our community, neighboring school districts, area law enforcement and emergency responders. Our schools have been assessed for safety related corrections and as identified the following specific improvements for each unique school facility.

- Building Communication Systems
- School Entrance Security
- Door Hardware and Locking
- Safe Classroom Accommodations
- School-grounds Exterior Security Measures
- Limited Video Surveillance
- Lighting and Controls

Recent Activities:

- Elert & Associates conducted safety and security assessments district-wide
- Building communication system enhancements at several schools

Upcoming Activities:

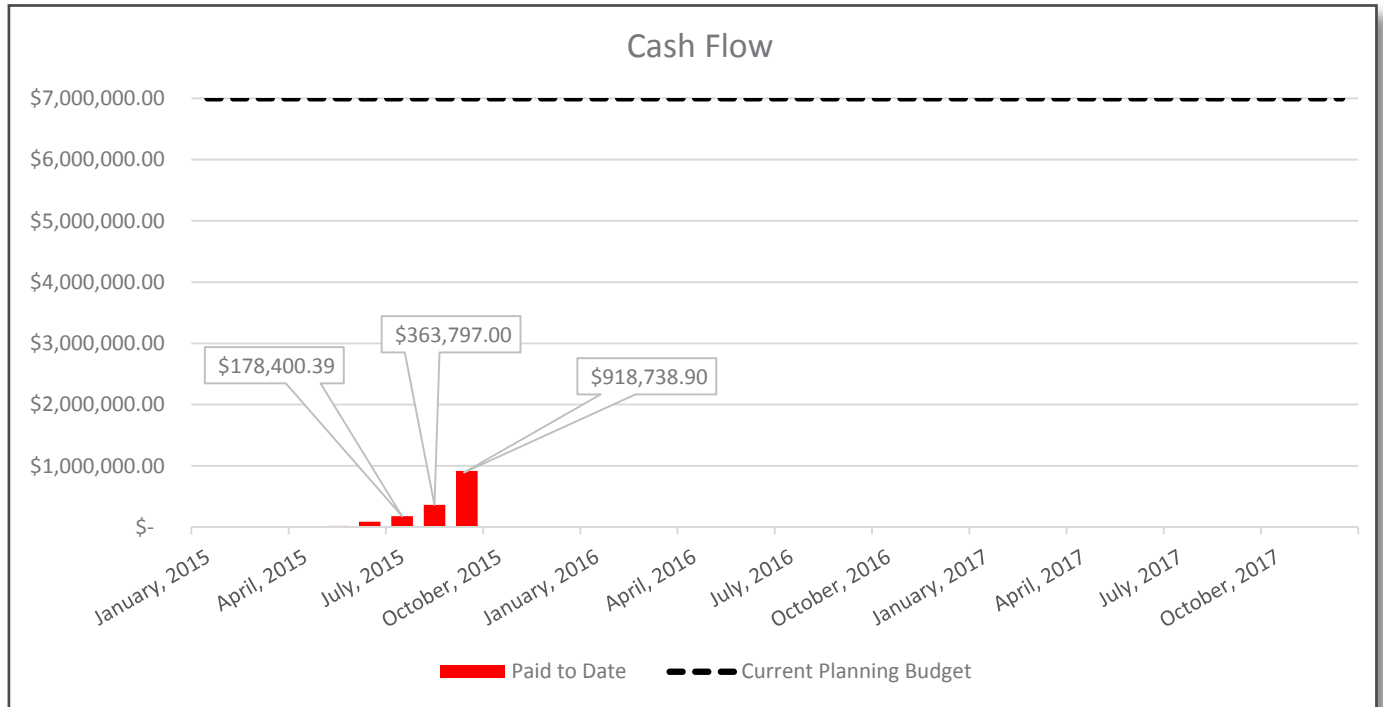
- Safety and security site assessment reports to be delivered over the course of the fall
- Review Federal and State law and policy around school safety
- Update district emergency response plans



DISTRICT-WIDE IMPROVEMENTS

Q3 2015

This category of projects represents work at all district sites that has been identified over time as improvements that response to life-cycle replacement, upgrades required by code, changes in instructional models, growth in activity participation and obsolescence. Active and upcoming projects under this bond component will be listed below.



2015 Improvements Projects:

15008 – Drainage & Play Equipment @ RR, ST, WM

| School | Task | Status |
|--------------------|-------------------------|----------------------|
| Rosemont Ridge | Baseball field drainage | Complete |
| Rosemont Ridge | Play equipment | Purchased & received |
| Stafford Primary | Playground drainage | Postponed |
| Stafford Primary | Play equipment | Purchased & received |
| Willamette Primary | Play equipment | Purchased & received |

Notes:

The play equipment was purchased and delivered to the district. The play equipment installation and stafford drainage work was publicly bid with no acceptable bids received. The procurement strategy is being reviewed and will likely be bid again in late winter or early spring.



DISTRICT-WIDE IMPROVEMENTS

Q3 2015

15009 – Carpet Replacement @ BF, WD, WM, WHS

| School | Task | Status |
|--------------|---------------------------|----------|
| Boones Ferry | Office Carpet Replacement | Complete |
| Inza Wood | Select Carpet Replacement | Complete |
| Willamette | Select Carpet Replacement | Complete |
| Wilsonville | Select Carpet Replacement | Complete |

Project Status:

The scope is complete, the project is in closeout.

Complete:

Demolition:



15010 – Painting @ ST, WM, WHS

| School | Task | Status |
|-------------|----------------------------------|-----------|
| Stafford | Exterior painting | Postponed |
| Willamette | Interior corridor painting | Postponed |
| Wilsonville | Select stadium handrail painting | Postponed |

Project Status:

Public bid process held, low bid contractor refused to sign contract. The project is postponed until 2016 to obtain new bids.

15011 – Select Restroom Renovation @ BC, ST, WLHS

| School | Task | Status |
|----------------|----------------------------|-----------|
| Boeckman Creek | Select Restroom Renovation | Complete |
| Stafford | Select Restroom Renovation | Complete |
| West Linn | Select Restroom Renovation | Postponed |

Project Status:

Restroom renovations at Boeckman Creek and Stafford were completed in-house by the district this summer. The work at West Linn High School will require design assistance and a contractor and will occur next summer.

DISTRICT-WIDE IMPROVEMENTS

Q3 2015

15012 – Robotics Renovation @ WHS

| School | Task | Status |
|-------------|----------------------------|--------|
| Wilsonville | Robotics Garage Renovation | Active |

Project Status:

Design is complete and the project was publicly bid.

The construction contract has been executed and the work is underway for a November 2015 completion.

Before:



Current:



15015 – Concession/Restroom/Team Room @ RR

| School | Task | Status |
|----------------|-------------------------------|--------|
| Rosement Ridge | Concession/Restroom/Team Room | Active |

Project Status:

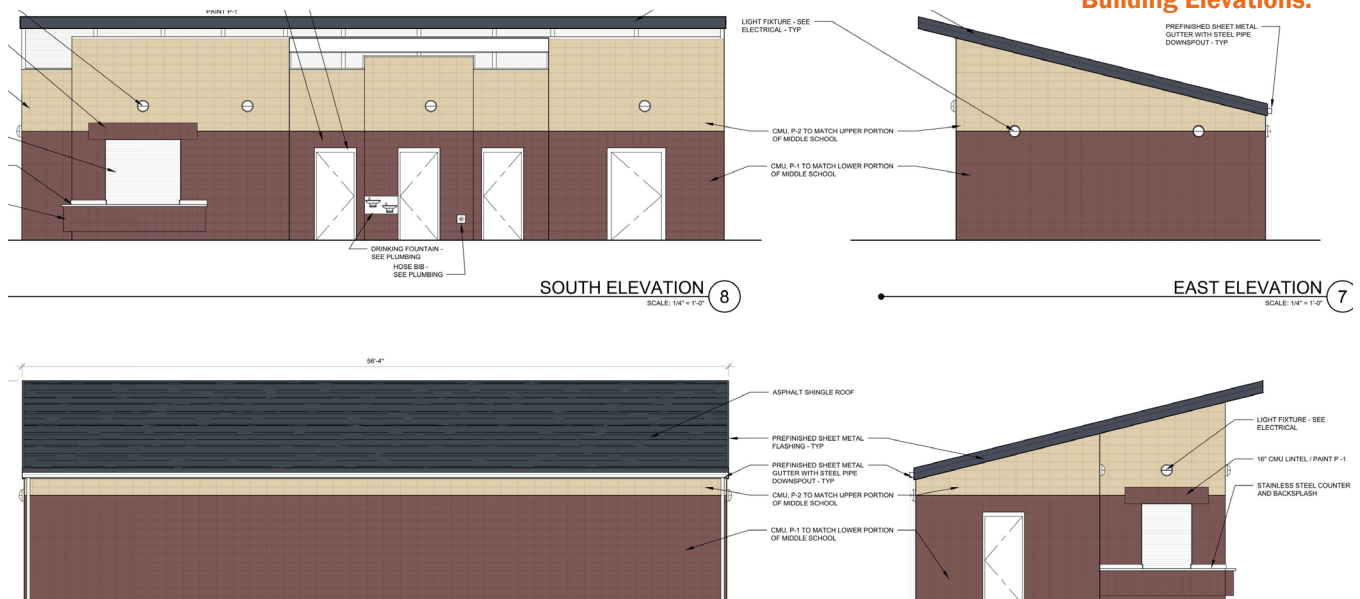
The design was approved by City of West Linn planning department in July.

The building permit has been received.

The public bid process is complete and the contract was approved by the School Board.

The contractor has mobilized and is targeting a February completion.

Building Elevations:



DISTRICT-WIDE IMPROVEMENTS

Q3 2015

15013 – Clock System Replacement @ WLHS

| School | Task | Status |
|-----------|--------------------------|----------|
| West Linn | Clock System Replacement | Complete |

Project Status:

Project is complete.

15014 – Gym Lighting Replacement @ WHS, WLHS

| School | Task | Status |
|-------------|-----------------------|----------|
| West Linn | Gym Light Replacement | Complete |
| Wilsonville | Gym Light Replacement | Complete |

Project Status:

Project is complete.

Complete:

